

CONSTRUCTION TIMBER GUIDE



Construction Timber Waste includes pallets, fence palings (painted, stained), flooring, hardwood and soft woods generated from construction & demolition projects. Timber Sleepers (end of life) without metal spikes or screws.

- ✓ Screws, nails, and small hinges/brackets
- ✓ Thin metal strip
- ✓ Heat treated Plywood Board
- ✗ Large Metal Angle brackets, Large Bolts >8mm diameter & length >150mm
- ✗ Manufactured timbers including MDF, Particle board & laminated material
- ✗ Plastic, Paper, cardboard, strapping
- ✗ Any other waste material including concrete, metals, rocks, glues, fabric etc



Unloading Services:

Loads that require unloading at Acacia Ridge or Stapylton must be coordinated with the Sales Team. No unloading facilities are available at Nudgee Resource Recovery.

24hours notice must be received prior to any deliveries.

Contact the Sales Team

E: sales.team@bmigroup.com.au

T: 07 3184 0800

C & D Waste Classification:

Timber loads containing:

- Large Bolts,
- Brackets,
- Plastic,
- Strapping,
- Cardboard,
- Paper
- General Waste
- Concrete, Rocks
- MDF, Particle Board
- Laminate

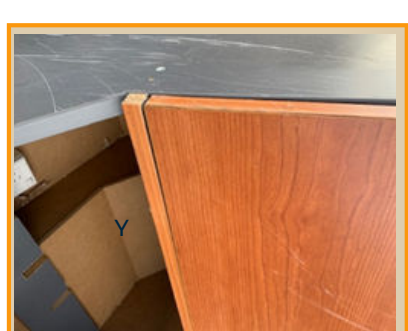
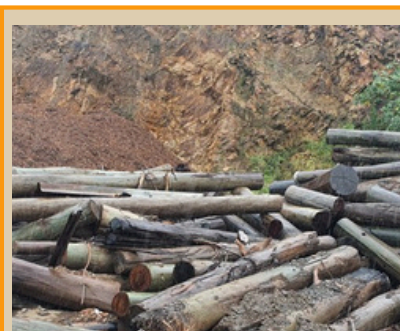
Will be charged as C&D Waste



RECOVERY, RECYCLE, RE-USE.

✗ Timber loads must exclude:

- Manufactured timbers including MDF, particle board & laminated material including:
 - Timber with attached plastic, fabric, strapping, paper or other non-timber material attached to pallets.
 - Domestic Internal Doors.
 - Formwork i.e black painted
 - Furniture that has fabric, leather, steel attached or where the majority is of a particle board construction i.e. Flat Pack Material.
- Painted PVC, laminated furniture, shelving, ie kitchens, benchtops, shutters etc.
- Timber with significant metal attached i.e. fish plates, angle iron etc.
- Treated timber (CCA or other treated timbers and sawdust). End of life Sleepers are acceptable.
- Power Poles or Copper Logs used in landscaping.
- Any other waste material including concrete, metals, rocks, glues, fabric etc.



Construction Timber is accepted to the following BMI Sites	146 Watson Rd Acacia Ridge	538 Nudgee Rd Hendra	39 Stonemaster Dr Stapylton	144 Rossmanns Rd Stapylton
Construction Timber (free from contamination)	Yes	Yes	Yes	No
Contaminated Construction Timber Loads (classified as C&D Waste)	Yes	Yes	No	Yes